



## SAFETY WARNINGS



**FOLLOW OWNER'S MANUAL TO ENSURE PROPER ASSEMBLY OF MIXER. USE THE REPAIR PARTS LIST IN CONJUNCTION WITH ASSEMBLY PROCEDURES.**

- SAFETY**
- CAREFULLY READ THE CAUTION AND WARNING MESSAGES.
  - MOTOR EQUIPPED WITH MANUAL RESET BUTTON.

- CAUTION**
- Review these instructions before operating mixer. Retain for future reference.
  - Two people may be required for some assembly steps.
  - All bolts should be fastened with the nuts facing toward the center of the mixer. Do not tighten fasteners until final alignment is achieved.
  - Parts may have sharp edges. Gloves should be worn. Use caution when assembling. Safety glasses should be worn while operating this mixer.

### WARNING - ELECTRICAL PRECAUTIONS

All wiring, electrical connections, and system grounding must comply with the National Electrical Code (NEC) and with any local codes and ordinances. Employ a licensed electrician.

### WARNING - RISK OF ELECTRICAL SHOCK

- A ground fault interrupter (GFI) protected circuit is recommended for all outdoor electrical devices.
- Keep motor operating area as dry as possible.
- Always disconnect the power before servicing.

### TECHNICAL SUPPORT

If you have any difficulties assembling or operating this mixer, phone 1-800-667-1457 (7:30 am to 5:00 pm central time). Our factory representatives will be pleased to assist you.

### BASIC TOOLS REQUIRED

- 12" Adjustable Wrench
- Hammer or Mallet

### OPTIONAL TOOLS

- 1/2" Socket &/or Wrench



**BEFORE USE: Make certain oil cup has been filled with clean unused vegetable oil, or light oil such as air tool oil. Oils such as canola or corn oil are also recommended.**

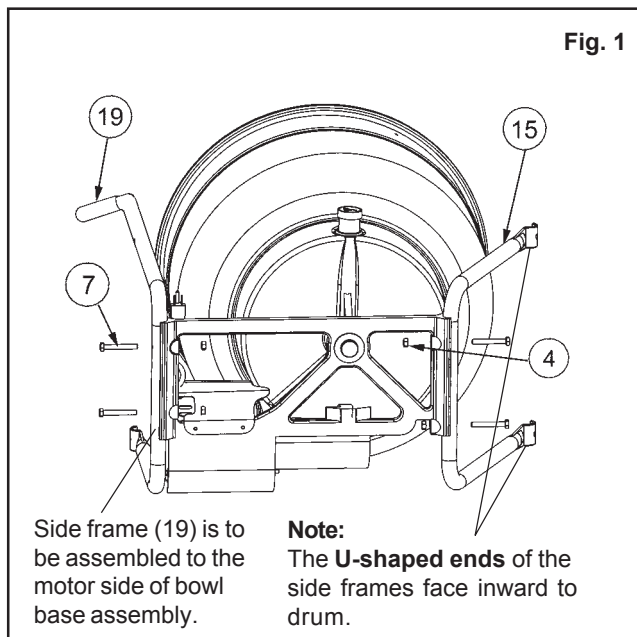
The Big cat mixer is shipped with vegetable oil, as it is environmentally friendly, and has proved in testing to be an effective lubricant for the gears. The Big cat can also be lubricated with other light oils such as air tool oil. It is important to use only clean oil in the oil cup.

## STEP 1 - ASSEMBLE UPPER FRAME TO BOWL ASSEMBLY

**NOTE:** Fasteners should only be tightened after final alignment is achieved. Use fastener package number 1 for all steps in this manual. Circled items make reference to the repair parts list.

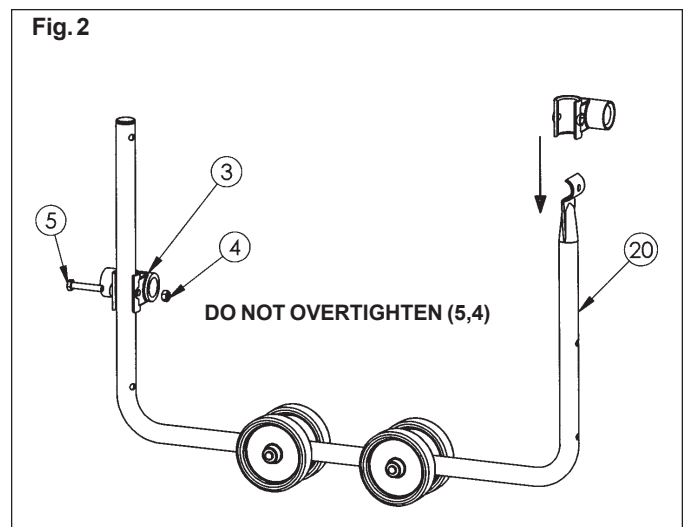
### 1a) Refer to Fig. 1.

Assemble upper side frames (15) & (19) to bowl base assembly, using four 5/16 x 2 1/4 bolts (7) and 5/16 nuts (4). **DO NOT TIGHTEN.**



### 1b) Refer to Fig. 2.

With drum support assembly (20) positioned as shown in Fig.2 (note location of crimped end), slide on pivot sleeves (3) (open section of pivot sleeve should be facing you and hex slot for the bolt facing out). Fasten pivot sleeves (3) using 5/16 x 1 3/4 bolts (5) and 5/16 nuts (4). **OVERTIGHTENING WILL CRACK PIVOT SLEEVE (3).**



## STEP 1 - ASSEMBLE UPPER FRAME TO BOWL ASSEMBLY

1c) Refer to Fig. 3.

Assemble drum support assembly (20) to upper side frames using 5/16 x 1 3/4 bolts (5), and 5/16 nuts (4). **DO NOT TIGHTEN.**

1d) Refer to Fig. 3.

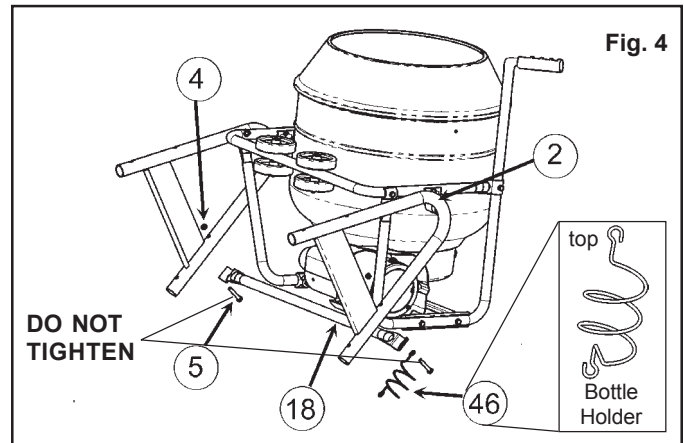
Assemble handle grip (22) onto right side frame (19). If hard to assemble apply a soap/ water solution to side frame.



## STEP 2 - ASSEMBLE FRAME

2) Refer to Fig. 4.

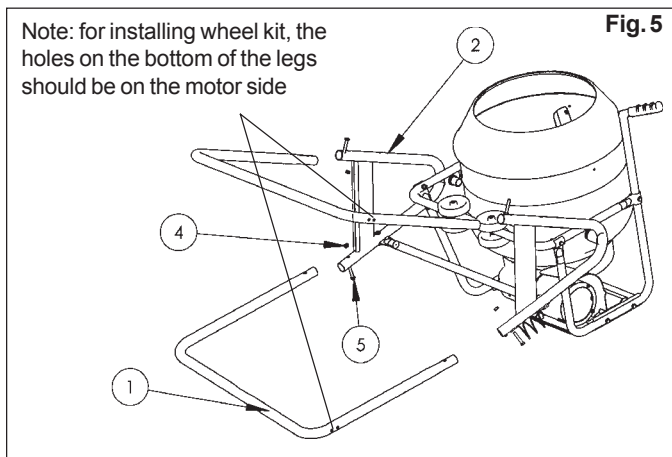
Place A-frame (2) onto drum support assembly. Align dump stop (18) with top holes in A-Frames (2), on motor side of the mixer align top eyelet of bottle holder (46) with dump stop. Fasten both sides of dump stop using two 5/16 x 1 3/4 bolts (5) and 5/16 nuts (4).



## STEP 3 - ASSEMBLE LEGS TO UPPER FRAME ASSEMBLY

3a) Refer to Fig. 5.

Place legs (1) into side frame (2) fasten using four 5/16 x 1 3/4 bolts (5) and 5/16 nuts (4). Ensure bolt goes through bottom eyelet of bottle holder.



3b) Refer to Fig. 6/7.

Raise the mixer into the upright position. This step may require 2 people. Standing in front of the mixer (Fig. 6), check the drum assembly (26) position relative to the drum support wheels (35). Center the drum support wheels in relation to the drum by pressing against the bowl base assembly (Fig. 7). Once centered, starting on the right hand side (Fig. 6), tighten all fasteners. A gap may occur between the drum assembly (26) and the drum support wheels (35). This is normal when the mixer is unloaded.

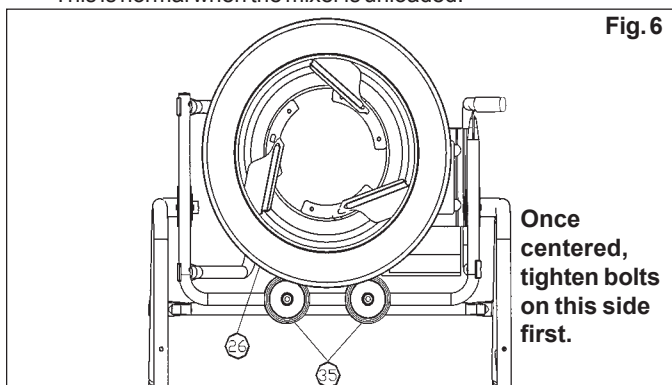
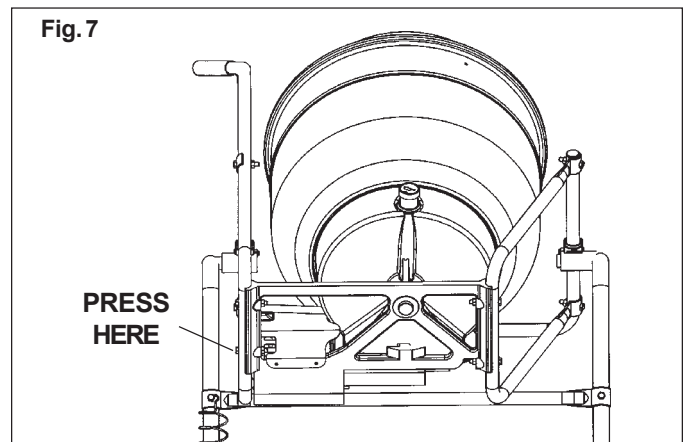
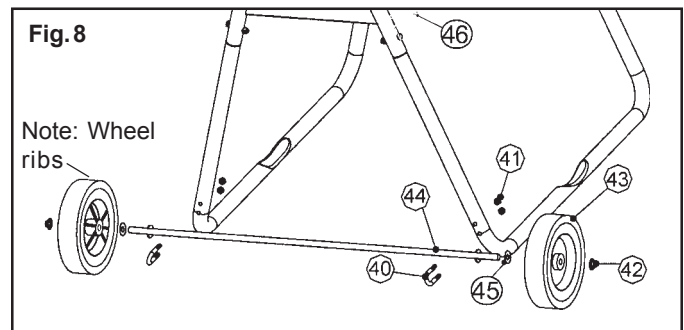


Fig. 7



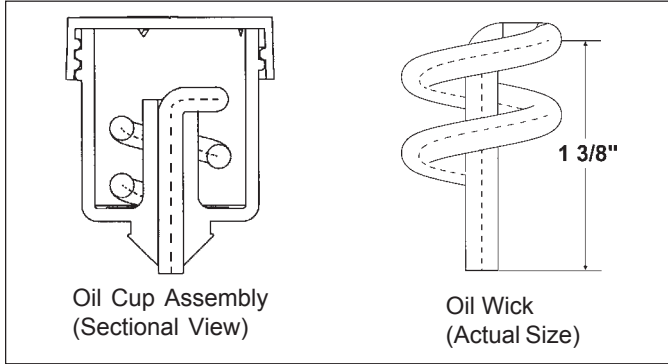
3c) Refer to Fig. 8.

Slide washers (45) onto axle (44), assemble wheels (43) onto axle (44) (**making sure the six ribs on the rim are facing toward the center of the mixer**). Using a mallet or hammer, tap the push nuts (42) onto the ends of the axle. Center the axle assembly to the frame on the end with four pre-punched holes. Using U-bolts (40) and 5/16 nuts (41), attach the axle assembly to mixer frame.



## BEFORE USING THE MIXER

- Ensure all bolts are tightened.
- Read all safety messages!



- A "GROUND FAULT INTERRUPTER" protected circuit is recommended for all outdoor electric devices!

- Remove oil cup cap. Remove oil wick and ensure straight section of wick is 1 3/8" in length.
- **Make certain oil cup has been filled with clean unused vegetable oil, or light oil such as air tool oil. Oils such as canola or corn oil are also recommended.**

The Big cat mixer is shipped with vegetable oil, as it is environmentally friendly, and has proved in testing to be an effective lubricant for the gears. The Big cat can also be lubricated with other light oils such as air tool oil. It is important to use only clean oil in the oil cup.

- Note:** Oil cup is designed to lubricate the gear system through a drip process. It is normal to have oil drip through the gear system especially if the mixer is left stationary for long periods of time.
- Let the mixer run empty for up to two minutes before adding first load.
  - Refer to mix instructions (see below)!

## POWER CORD SAFETY

- Do not use multiple extension cords.
- Do not use over 145 ft. cord (see chart).
- Do not use a cord gauge of less than 16 AWG.
- **Make certain oil cup has been filled with clean unused vegetable oil, or light oil such as air tool oil. Oils such as canola or corn oil are also recommended.**

	Recommended Electrical Cord Gauge & Maximum Length (in feet)		
	0-55 ft.	55-90 ft.	90-145 ft.
Gauge (AWG)	16	14	12

## CEMENT MIX INSTRUCTIONS

**Note:** Refer to mix instructions from the cement manufacturer.

- 1) **Make certain oil cup has been filled with clean unused vegetable oil, or light oil such as air tool oil. Oils such as canola or corn oil are also recommended.**

The Big cat mixer is shipped with vegetable oil, as it is environmentally friendly, and has proved in testing to be an effective lubricant for the gears. The Big cat can also be lubricated with other light oils such as air tool oil. It is

important to use only clean oil in the oil cup.

- 2) Start the mixer.
- 3) Add half the required amount of water.
- 4) Add a small amount of aggregate.
- 5) Add half the quantity of cement.
- 6) Add aggregate, cement and water until desired consistency is attained.
- 7) Dump the load gently to avoid spillage.

## PRE-MIXED CEMENT MIX INSTRUCTIONS

**Note:** Refer to mix instructions from the pre-mix manufacturer.

- 1) **Make certain oil cup has been filled with clean unused vegetable oil, or light oil such as air tool oil. Oils such as canola or corn oil are also recommended.**

The Big cat mixer is shipped with vegetable oil, as it is environmentally friendly, and has proved in testing to be an effective lubricant for the gears. The Big cat can also be

lubricated with other light oils such as air tool oil. It is important to use only clean oil in the oil cup.

- 2) Start the mixer.
- 3) Add half the required amount of water.
- 4) Slowly add pre-mixed cement and water until desired consistency is attained.
- 5) Dump the load gently to avoid spillage.

## MAINTENANCE



**BEFORE USE:** Make certain oil cup has been filled with clean unused vegetable oil, or light oil such as air tool oil. Oils such as canola or corn oil are also recommended.

The Big cat mixer is shipped with vegetable oil, as it is environmentally friendly, and has proved in testing to be an effective lubricant for the gears. The Big cat can also be lubricated with other light oils such as air tool oil. It is important to use only clean oil in the oil cup.

**AFTER USE:** Clean out the drum with water. If cement has dried to the inside of mixer, tap the outside of the drum with a rubber or plastic mallet. Dump mixer to empty dried cement from drum (**DO NOT use a steel hammer to dislodge dried cement from mixer**).

### AT THE END OF EACH PROJECT:

- 1) To avoid continuous drip, empty oil cup after each project.
- 2) If the mixer will be sitting idle for more than two weeks, remove and wipe off the wick. Replace wick in cup.

**MOTOR:** Ensure that the motor is connected to a 115V outlet. Ensure long extension cords are of 16AWG construction or better. Do not use extension over 145 ft. Refer to **POWER CORD SAFETY** (see above).

**NOTE:** Insufficient conductor size (incorrect gauge) &/or too long an extension cord will result in a low voltage condition causing premature motor failure.

## TRUCK AND TRAILER MOUNT OPTION

Simply remove legs (1) from unit and secure all four corners of the side frame (2). Front (dump side) frame corners must be secured the same width as the back side to ensure the frame is parallel.

### TROUBLE SHOOTING GUIDE FOR BigCat MIXER

PROBLEMS	CAUSES	SOLUTIONS
<b>Motor trips out repeatedly on reset.</b>	Oil cup has not been filled.	<b>Make certain oil cup has been filled with clean unused vegetable oil! Canola oil or corn oil are recommended.</b>
	Oil cup not siphoning properly.	Oil wick not properly inserted in oil cup. Refer to page 3.
	Extension cord too long.	Refer to power cord safety (page3).
	Extension cord too light a gauge.	Refer to power cord safety (page3).
<b>Mixer is plugged in, but does not start (motor is not humming).</b>	Low voltage to unit.	<b>USE ONLY</b> recommended cord lengths. If a generator is being used, check the generator setting.
	The drive system is binding.	<b>Make certain oil cup has been filled with clean unused vegetable oil! Canola oil or corn oil are recommended.</b> When the above solutions have been checked, <b>PRESS THE MANUAL RESET BUTTON</b> located on the motor. Mixer will commence operation. <b>CAUTION:</b> Multiple resets may burn out the motor and void warranty, contact factory.
<b>Oil Cup becomes detached.</b>	Oil Cup knocked loose.	Oil cup can be re-installed. "Snap Fit" design.

If you experience any problems assembling your mixer or if you require further information, please call **1 (800) 667-1457**. Our factory representative will be pleased to assist you.

**Monarch Industries (Head Office)**

P.O. Box 429  
51 Burmac Road  
Winnipeg, MB, Canada  
R3C 3E4

Ph. (204) 786-7921  
or 1-800-667-1457  
Fax (204) 889-9120

[www.redlionproducts.com](http://www.redlionproducts.com)

#### LIMITED MONARCH INDUSTRIES WARRANTY

For one year from date of purchase, Monarch Industries will replace or repair for the original purchaser, free of charge, any part or parts, found upon examination by any Monarch Industries Authorized Service Depot or by the Monarch Industries factory, to be defective in material or workmanship or both. Equipment and accessories not manufactured by Monarch Industries are warranted only to the extent of the original manufacturer's warranty. All transportation charges on parts submitted for replacement or repair under this warranty must be borne by the purchaser. For warranty service, see your nearest Monarch Industries Authorized Service Depot.

THERE IS NO OTHER EXPRESS WARRANTY. IMPLIED WARRANTIES INCLUDING THOSE OF MERCHANTABILITY AND FITNESS FOR A PARTICULAR PURPOSE ARE LIMITED TO ONE YEAR FROM PURCHASE AND TO THE EXTENT PERMITTED BY LAW. LIABILITY FOR CONSEQUENTIAL DAMAGES UNDER ANY AND ALL WARRANTIES ARE EXCLUDED TO THE EXTENT EXCLUSION IS PERMITTED BY LAW. This warranty is in addition to any statutory warranty.